

EGGLESCLIFFE & EAGLESCLIFFE COUNCIL

NEWSLETTER

Issue Number 103 AUTUMN 2024

website <http://www.egglescliffeandeaglescliffe-pc.org.uk>



REMEMBRANCE SUNDAY

Wreaths will be laid on behalf of the Parish on Sunday 10th November as follows:

St John's Church, Egglecliffe: There will be a service in church at 10.00am, followed by a procession to Egglecliffe War Memorial at 10.45am.

All Saints Church, Preston on Tees: Service commences at 9.45am, the parade will then make its way to the War Memorial, Albert Road.

Although there is no formal service, a poppy wreath will be laid at the War Memorial outside the Great North Air Ambulance Service offices at Urray Nook.

A WORD OF WELCOME FROM THE CHAIR

Welcome to this Egglecliffe and Eaglescliffe Council Newsletter! Your Parish Councillors are community minded volunteers who are part of our Parish Council to make a positive difference to where we live and I'd like to thank them for their amazing efforts and welcome two new Councillors, Yousef Shanib and David Knowles who I am sure will contribute a great deal. There are still openings for more councillors to help run the Parish.

The Council is looking forward to the 200th Stockton and Darlington Railway celebrations next year and looking at ways to mark the event.

Anti Social behaviour including vandalism continues to be problem in the parish (see p3) and the Council are again endeavouring to engage with the Police, Stockton Borough Council ASB, Ward Councillors and residents to look at this continuing problem and try to remedy as best we can. I cannot stress enough the need to report incidents to the Police. On a positive note, volunteers are helping keep our community clean (Litter Pickers) and warm and welcoming (The Community Hall among many others!) are a real asset to us all and show how everyone can make a positive difference.

Thank you, Cllr Marc de Launay

PLAY AREA UPDATE

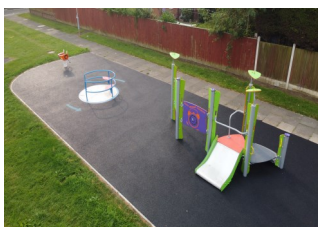


St Margaret's

After a wet winter, March saw the installation of the new adult fitness equipment at St Margaret's play area, presented in the last newsletter, giving adults an opportunity to keep active, whilst keeping an eye on the kids. The Cross Trainer and Air Walker are mechanical pieces, designed for low-impact, general fitness, burning calories and toning up while the Fit Pod comprises parallel bars, benches for sit ups, a leg lift area and high bars for pull-ups. There is a sign nearby, with a QR code to scan, for ideas of how to use the equipment, but don't let that restrict you! If . We have had to remove some older, damaged wood pieces for safety. Please let us know what you think we could replace them with.

Amberley Way

Summer saw investment into some new inclusive play equipment into the Amberley Way, play area. We canvassed residents, and, from the suggestions returned, we added some tactile equipment, a wheelchair-accessible roundabout (proving very popular), an inclusive slide and a seated springer to the more traditional items already there. With Phases 2 and 3 still to come in the near future, we are still keen to hear your suggestions, particularly from those who will most likely use it, our children and young adults.



What would make this your favourite play area ? Please use our form to tell us what we should be looking at.

<https://forms.office.com/r/dL2J2vY2zz>



CHECK WHAT'S ON & SUPPORT YOUR LOCAL VENUES

This newsletter cannot carry details of all coming events due to its twice yearly issue, so it's worth keeping your eyes open on notice boards, social media and the local press. We are privileged to be served here by community halls, run by volunteers, with charitable status. They are:

Egglecliffe Parish Hall, Butts Lane: <http://www.egglecliffeparishhall.co.uk/events-ticket-information.html>

Egglecliffe Community Centre, Durham Lane <https://www.eggcomctr.co.uk/upcoming-events/>
Egglecliffe Village Hall, 590A, Yarm Road <http://www.teesvalleyvillagehalls.net/egglecliffe.html>



STOCKTON & DARLINGTON RAILWAY BICENTENARY EVENT 2025

Egglecliffe and Egglecliffe Parish Council with Egglecliffe Area Residents' Association (EARA), will be holding an event on **Sunday 7th September 2025**, on the Village Green to celebrate the 200th anniversary of the Stockton and Darlington Railway. We recognise that this anniversary is a milestone in railway history and, as part of the original railway line passed through Egglecliffe itself, it would be remiss of us not to mark this significant event.

Planning is already underway, and we believe that we will deliver an experience that will last in the minds of residents and visitors for many years to come. With free entry to the event, we hope you and your family will be able to come along and celebrate it with us.

Egglecliffe Community Litter Project (ECLP)

ECLP was formed by local resident Rebecca, in June 2023. Since then, over 80 volunteers have attended group litter picks, and over 640 bags of litter have been collected from local streets. The group meets regularly on weekends and all ages are encouraged to take part. ECLP also engages with local clubs and schools to increase involvement. If you would like to find out more, please email: egglecliffeclp@gmail.com

Allotments



The Parish Council own two allotment sites, one in Egglecliffe Village and another, Eliff's Mill, on the A67 (Airport Rd). Both sites have low rents from only £15 a year for a half plot! Waiting lists for both sites are open to Egglecliffe & Egglecliffe residents. If you would like to apply for an allotment please contact the Clerk on 01642 785951 or email.

OUR TRAIN SERVICE IN ITS 200TH YEAR

As we prepare to celebrate the bicentenary next September of the pioneering Stockton & Darlington Railway through our parish, things are happening to our present-day lines.

Construction is in progress at **Egglecliffe Station** of a new footbridge (with lifts) which will connect Egglecliffe Industrial Park with the train platforms and Station Road. Passengers will no longer have to use the steep, slippery ramps. A new car park will be opened on the west side of the tracks, accessible from Durham Lane via Cleasby Way. Not only will this provide much needed extra parking spaces but it will enable residents of west Egglecliffe and the expanding west side of Stockton to come to the Station without using Yarm Road.

Furthermore, **TransPennine Express** have announced, "We will add Egglecliffe into our network from this December, providing a direct service to Manchester Airport, Leeds and York."
No further need to travel to Yarm or Thornaby Stations!

Engineers on behalf of Network Rail have been doing ground investigation trial borings over Yarm Tunnel (which is not in Yarm but under **Urlay Nook Road** in Egglecliffe). At present the loading gauge will not accommodate trains carrying sea-going containers which currently need to reverse at Darlington. A decision will be made on whether and what work will be done after the practical and financial feasibility of altering this and other structures is known. Electrification is not planned as one of the changes. The QE2 Memorial Garden above the Tunnel, which your parish council maintains, was disrupted during the works but is now remediated.

Work is ongoing on strengthening various parts of **Yarm Viaduct**, which will include arches on the Egglecliffe side of the Tees.

St John's Church Floodlights update

Owing to the existing aesthetic floodlighting equipment and the underground cables reaching the end of their maintainable life, the Parish Council have looked at sustainable options including solar lighting to meet future net zero targets. However the costs are expected to be prohibitive to install a new lighting system that is suitable within the churchyard and mature trees. Therefore it has been agreed with St John's Church to remove the redundant lighting.

Civic Enforcement

Tel: 01642 607943

civic.enforcement@stockton.gov.uk



ROAD SAFETY IN EGGLESCLIFFE & EAGLESCLIFFE

Following reports from concerned residents of speeding vehicles and perceived dangerous driving within our estates, the Parish Council are exploring options of introducing 20mph measures within our estate roads and are currently working with partners regarding the costs and processes needed.

DURHAM LANE CYCLEWAY & CROSSINGS UPDATE

Stockton Council. In addition to providing a cycle path from Tesco roundabout, will:

Extend the 30m.p.h. limit to north of Cleasby Way entrance

* Increase the speed limit on Cleasby Way to 30 m.p.h;

Construct road crossings for both pedestrians and cyclists:

* On **Chaldron Way**, with flat-top hump, near the post-box;

* Signal-controlled, between Chaldron Way / Holwick Oval roundabout and Allen's West Crossing

* Signal-controlled, with flat-top hump, near Greenfield Drive bus stop

* On **Urlay Nook Road**, just west of the Tesco roundabout;

* A signal-controlled pedestrian crossing near *The Eagle*; and

* Flat-top humps at both ends of **Mayfield Crescent**.

Recent incidents & Anti Social Behaviour

Sadly there have been a number of Anti Social Behaviour incidents at St Margaret's play area with youths throwing fireworks at residents and properties, also setting fire to litter bins. Thankfully no one was injured, but the youths were identified as being local. So again we are endeavouring to engage with the Police, Stockton Borough Council ASB, Ward Councillors and residents to look at this continuing ASB and try to remedy as best we can. **It is paramount that residents report these incidents**, however large or small, to the police and SBC as they need these statistics to get a true picture of the area's low-level crime and need to see hotspots or have intelligence in order to tackle it. As a community we do need to take responsibility too, from making sure our own kids are not involved to reporting incidents. We live in a fantastic community that is a safe one for families, residents young and old, so it is a shame to see this tiny minority spoil the enjoyment of the area for so many people.

COMMUNITY AWARDS

Our Parish Council Community Award(s) is given every year to individuals and/or groups who have made a worthwhile contribution to our life within the Parish Community.

Those nominated don't necessarily have to be resident or based in the Parish, but they need to simply meet at least one of the following criteria:

- To have achieved something particularly noteworthy within the Parish;
- To have enhanced the reputation of the parish – physically or metaphorically;
- To have made a significant contribution to the conservation and protection of the natural environment of the Parish.

Just send details of the person you wish to nominate as well as your own in writing or email to the Clerk to the Council and why.

Parish Website

The parish website is constantly being updated with new information and tools to make it more useful and informative for residents and include: Links to a Defibfinder to help identify nearby defibrillators; Connect Tees Valley for travel planning whether by bus/train/cycling or on foot; link to SBC Planning portal to view planning applications. The Parish Council are currently looking at the introduction of a Facebook page too.

COMMUNITY PAYBACK TEAM

You may have noticed that benches throughout the parish are looking refreshed. This is thanks to the Community Payback team who worked with the Parish Council early summer to repaint benches to Egglecliffe Memorial Gardens & Village Green, Stoney Bank, Egglecliffe Memorial Park on Yarm Road and near the Amberley Way play area. As well as clearance work on Eliffs Mill allotment site and repainting the Leven Close play area railings.

CONTACT YOUR COUNCILLORS

Chairman:	Tel. No.	Email
Cllr Marc de Launay	07974 565085	marcdelaunay@egglescliffeandeaglescliffe-pc.org.uk
Vice-Chairman:		
Cllr Kath Roebuck		cllrkroebuck@yahoo.com
Cllr John Fletcher	01642 786456	johnfletcher@egglescliffeandeaglescliffe-pc.org.uk
Cllr Robert Richardson	07703 820303	robertrichardson@egglescliffeandeaglescliffe-pc.org.uk
Cllr Tony Collier	01642 791726	tonycollierc@hotmail.com
Cllr Alan Marsden	01642 961892	alanlizmarsden@gmail.com
Cllr David Knowles	07974 835537	dave.knowles3@gmail.com
Cllr Yousef Shanib		yshanib@yahoo.com
Clerk to the Council	01642 785951	clerk@egglescliffeandeaglescliffe-pc.org.uk

Council meetings, are usually held on the first Thursday each month at All Saints Church, Dunottar Avenue, Eaglescliffe. These meetings are open to the public and press. If there's something you wish to discuss with your Councillor, please come along, you are welcome to observe from 7pm and there are opportunities at 8pm to speak at the meeting.

Forthcoming meetings are :-

5th December 2024; 9th and (provisionally) 23rd January, 6th February, 6th March, 3rd April 2025

Check our website <http://www.egglescliffeandeaglescliffe-pc.org.uk> for full meeting details, including the dates of committee meetings. There are currently vacancies on the Council, for further information or if interested to join the council please contact the Clerk.

USEFUL CONTACTS

Anti-social Behaviour: If you are experiencing Anti Social Behaviour in your area, contact the Civic Enforcement Service or use the COPA app.

In an emergency contact the police.



Civic Enforcement Service Tel: 01642 607943 *Email: civic.enforcement@stockton.gov.uk*

Your concerns will be passed on to a dedicated officer for that area who will be able to offer advice and information, and take action where necessary.

Neighbourhood Policing Call 101.

In an emergency or if a crime is actually taking place, ring 999

Care For Your Area Tel. 01642 391959 *Email: careforyourarea@stockton.gov.uk*

Refuse collection, street cleansing, kerbside recycling, horticultural services, highways maintenance, fly-tipping (removal), etc.

Street Lighting Tel. **01642 391959** Damaged or defective street lights - quote the identification number from the light, bollard or sign and the address of the closest building or road name.

Samaritans 116123 Free any time from any phone. Local branch **01642 217777** (charges apply)

COMMENTS

If you would like to comment, raise suggestions or complaints about anything happening in the Parish (or even anything not happening!) or on any items in this newsletter, please contact the council by email, telephone, via the QR code attached, or by letter with your contact details which will only be used for the purpose of responding to your comments and will not be shared with any third party without your prior consent.

The Old Offices, Urlay Nook Road, Eaglescliffe TS16 0LA
Tel: 01642 785951 Email: clerk@egglescliffeandeaglescliffe-pc.org.uk
website <http://www.egglescliffeandeaglescliffe-pc.org.uk>

